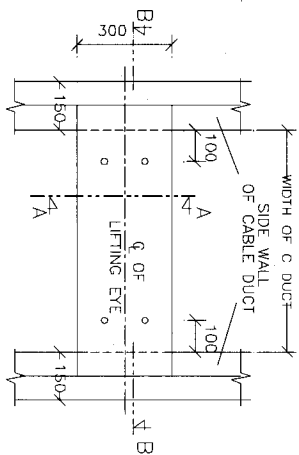


E-TYPE / SSY - TYPE - 3 DUCT
700MM X 450MM DEEP

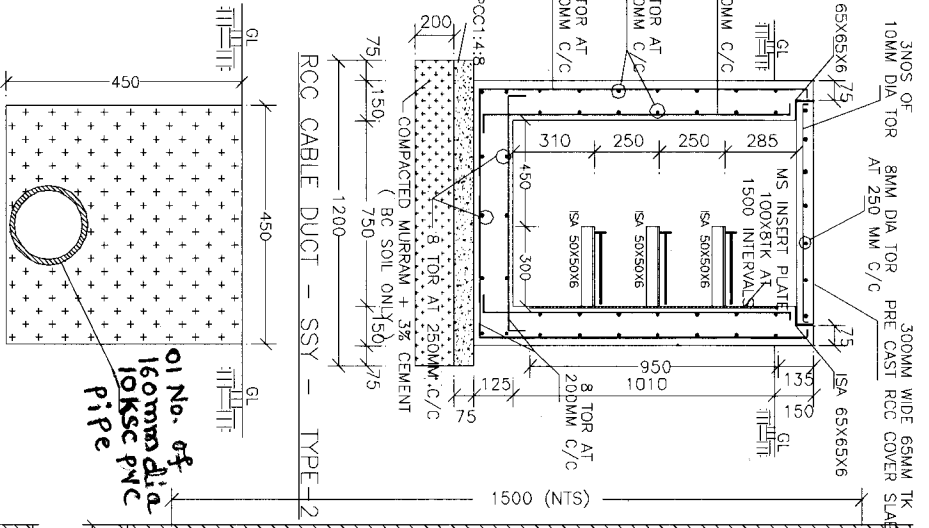
NOTES:

1. ALL DIMENSIONS ARE IN MMS ONLY UNLESS OTHERWISE SPECIFIED.
2. STRUCTURAL CONCRETE SHALL BE M20 GRADE.
3. LEAN CONCRETE SHALL BE OF 1:4:8 - 75MM TK.
4. LAP/ANCHORS LENGTH SHALL BE 50 TIMES THE DIA OF BARS UNLESS OTHERWISE SPECIFIED.
5. CLEAR COVER TO MAIN REINFORCEMENT SHALL BE AS FOLLOWS:
ITEMS TOP BOTTOM SIDE
BASE SLAB 25MM 40MM 40MM
PRECAST COVER 25MM 15MM 25MM
WALL : 25MM (INSIDE FACE)
40MM (EARTH FACE)



PRECAST

COVER SLAB DETAILS (TYPICAL) F-TYPE / SSY - TYPE - 4 DUCT
450MM X 450MM DEEP

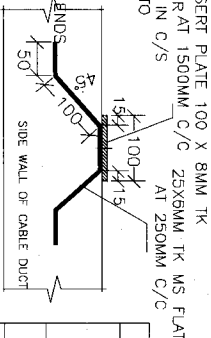


RCC CABLE DUCT - SSY - TYPE-2
1500 (NTS)

LIFTING HOOK DETAILS

SECTION B B

SECTION A A



CABLE TRAY DETAILS (TYPICAL)

KARNATAKA POWER TRANSMISSION CORPN LTD

DETAILS OF RCC CABLE DUCTS IN STATION YARD
TYPE 1,2,3 & 4 FOR 110KV AND 66KV SUB STATIONS

DRG NO: CEE (P & C) / SE (C) / 06-07 / 130485 / 008
NOT TO SCALE

DRN	DGN	SUB	REC	CHIEF ENGR ELE	PLANNING AND CO ORINATION

For tenders purpose only